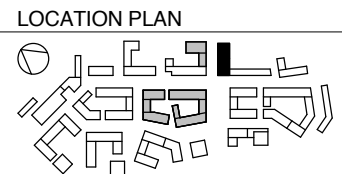
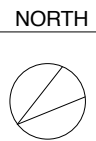


- LEGEND:**
- A. ENTRANCE LEVEL DOOR 800mm MIN WIDTH WITH CIRCULATION ROUTE TO DOOR 1500mm
 - B. INTERNAL CIRCULATION DOORS IN UNITS MIN CLEAR WIDTH 775mm WITH 300mm NIBS
 - C. BATH 1700mm x 700mm (WITH 1000mm x 1000mm ACTIVITY SPACE FOR FURNITURE SHOWER PROVISION) & 400mm END TRANSFER SPACE
 - D. 1500mm x 1500mm TURNING CIRCLE IN MAIN BATH ROOM
 - E. SLIDING DOOR TO BALCONY 800mm MIN CLEAR OPENING WIDTH
 - F. 1700mm x 1100mm TRANSFER SPACE
 - G. 1800mm x 1500mm MANEUVERING SPACE
 - H. 1200mm x 1200mm ACTIVITY SQUARES IN BEDROOMS
 - I. 1000mm TRANSFER SPACE TO SIDE A FOOT OF BED
 - J. 2000mm x 2500mm ACTIVITY SPACE IN LIVING
 - K. 1400mm x 1700mm ACTIVITY SPACE IN KITCHEN

- NOTES:**
1. ALL BATHROOMS PROVIDED WITH SUITABLE REINFORCED WALLS FOR FUTURE ADAPTATIONS
 2. CEILINGS DESIGNED TO SUPPORT EXPANDED BOLT FIXING WITH VOIDS TO BE CLEAR OF SERVICES AT POTENTIAL LOCATIONS
 3. ALL DOORS CAPABLE OF OPENING BEYOND 90 DEGREES



NOTES

DATE	REV	DESCRIPTION	CHK
25.11.14	P1	Planning Application Issue	JR