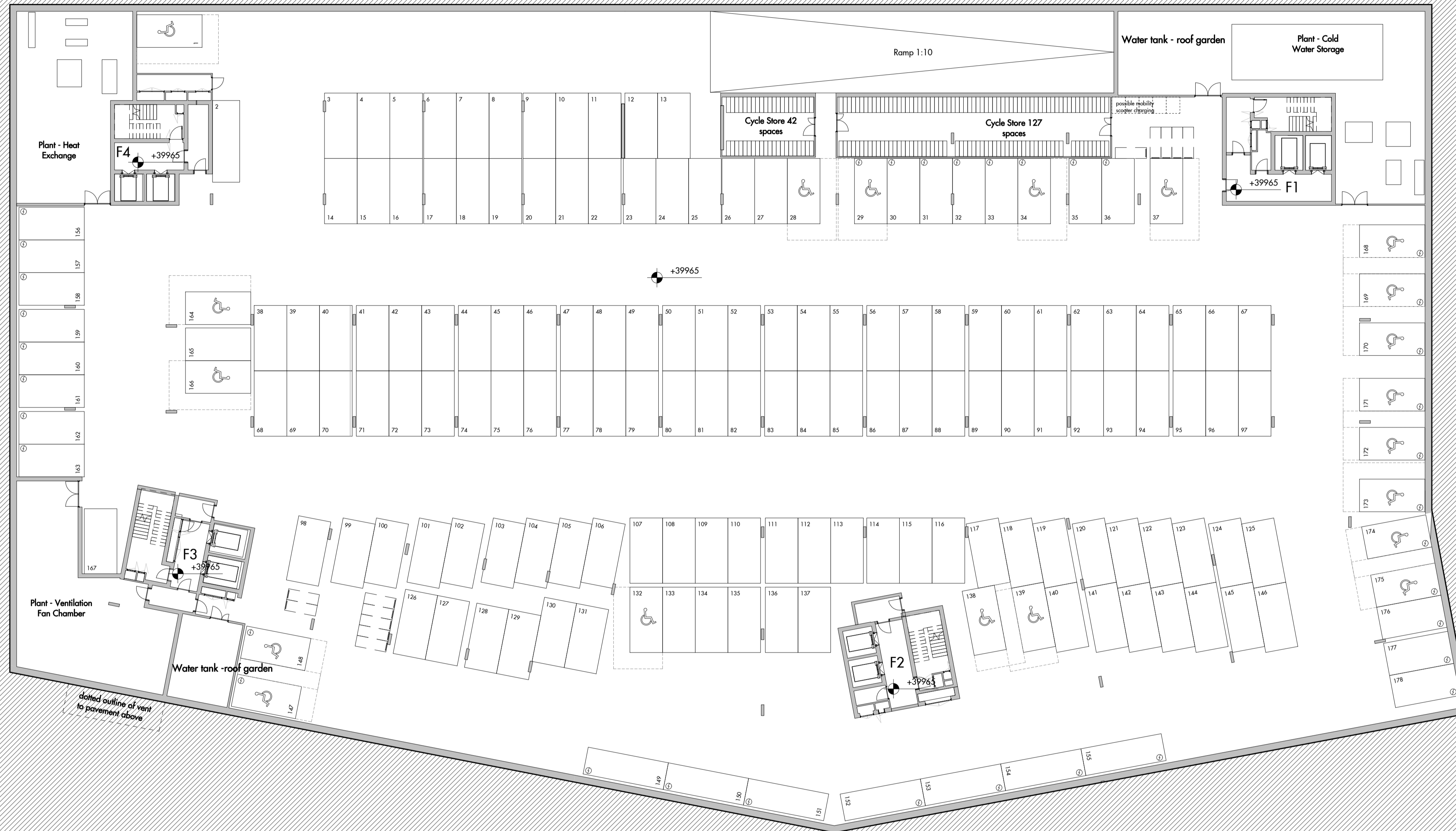


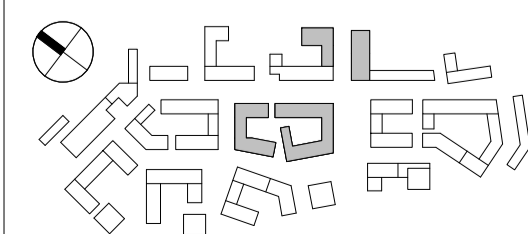
Bicycle Spaces	
Level	No.
F_L-01_Lower Ground Floor Level	266
F_L-02_Basement Plan	169
Grand total: 435	

Motorbike Bays	
Level	No.
F_L-02_Basement Plan	12
Grand total: 12	

Car Parking Bays_basement and lower ground				
F_L-01_Lower Ground Floor Level		16	Disabled Parking	CAR PARK
F_L-01_Lower Ground Floor Level	CAR 2000mm x 6000mm	2	Parallel Parking	CAR PARK
F_L-01_Lower Ground Floor Level	CAR 2400mm x 4800mm	126	Parking	CAR PARK
F_L-01_Lower Ground Floor Level: 144			⚡ 29 N. Possible electrical charging spaces	
F_L-02_Basement Plan		20	Disabled Parking	CAR PARK
F_L-02_Basement Plan	CAR 2000mm x 6000mm	8	Parallel Parking	CAR PARK
F_L-02_Basement Plan	CAR 2400mm x 4800mm	150	Parking	CAR PARK
F_L-02_Basement Plan: 178			⚡ 36 N. Possible electrical charging spaces	
Grand total: 322				

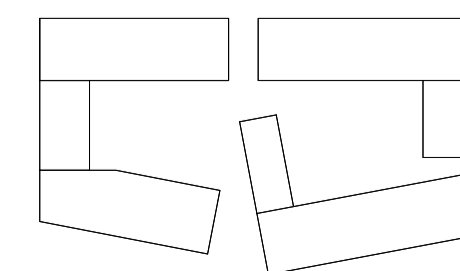


FOR PLANNING



Do not scale from this drawing. Use figured dimensions only. Figured dimensions are in millimetres. All dimensions shall be verified on site before proceeding with works. All levels are nominal: detailed site survey to be carried out to verify positions and level relationships with site features and ordnance survey. All levels are in metres. This drawing is for design intent only. This drawing is to be read in conjunction with other documentation from the architect, design team, main contractor and employer's agent. The architect must be notified of any discrepancies.

REV	DATE	DESCRIPTION	CD
P1	05.12.2014	PLANNING APPLICATION	MD



Allies and Morrison Architects
 85 Southwark Street
 London SE1 0HX
 telephone 020 7921 0100
 facsimile 020 7921 0101
 email info@alliesandmorrison.co.uk

West Hendon : Block F
 Basement Plan

765_05_07_098

A&M JOB NO: 765.05

SCALE 1 : 200 @ A1

P1

Revision